



 CUPACLAD

---

MAINTENANCE, STORAGE  
AND HANDLING MANUAL



# TABLE OF CONTENTS

---

Maintenance .....	4
Storage .....	6
Handling .....	6

## / MAINTENANCE

The CUPACLAD rainscreen cladding system requires minimum maintenance.

Follow these simple steps to ensure continued peak performance:

• **Annual maintenance** inspections should be carried out to ensure that:

- **No slates are damaged**, the ventilation protection mesh, gutters and downpipes are clear and in a good state, and that such features as flashings and seals are in place and secure.

• **Cleaning** of several forms of pollution can be performed as defined:

- **Air pollution** (dust, dirt, soot, etc.) – clean with water solution.
- **Natural pollution** (moss, algae) – clean with water solution.
- **Graffiti** (spray cans) – clean with acetone or Dupicolor Graffiti-Ex, always following the instructions provided by the furnisher.

When detected, **damaged slate** must be replaced quickly.

The replacement procedure of slate. Replacing slate is different for each of the CUPACLAD systems. Instructions for each are below:

## / CUPACLAD® 101

Required tools to replace a slate in CUPACLAD® 101 system:



- ✓ **1 x slate:**
  - CUPACLAD® 101 Logic (16"x 8")
  - CUPACLAD® 101 Random (20"x 10" / 20"x 8" / 20"x 6")
  - CUPACLAD® 101 Parallel: 16"x 10"
- ✓ **2 x screws**
- ✓ **1 x hammer**
- ✓ **1 x saw**
- ✓ **1 x drill (Ø3/16")**

## REPLACEMENT OF A DAMAGED SLATE IN CUPACLAD® 101 SYSTEM\_



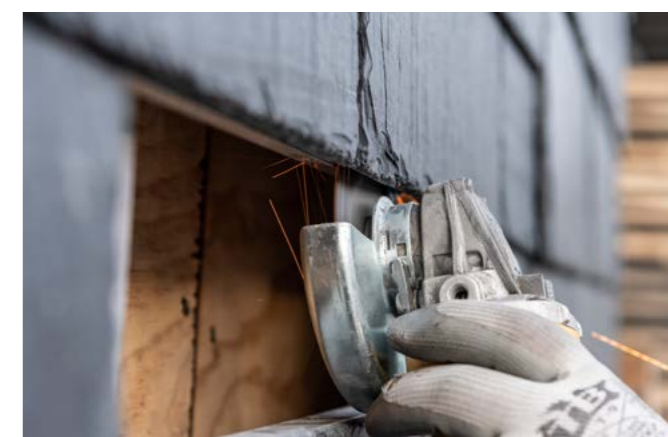
1 Break the damaged slate



2 With a hammer, remove the broken pieces of the slate



3 Cut the screws holding the broken slate with the saw



REPLACEMENT OF A DAMAGED SLATE IN CUPACLAD® 101 SYSTEM\_



Place the new slate with the help of a hammer



Drill a hole in each corner of the slate with a  $\varnothing$  3/16" drill  
 • 3/4" from the bottom  
 • 3" from the lateral (right and left)

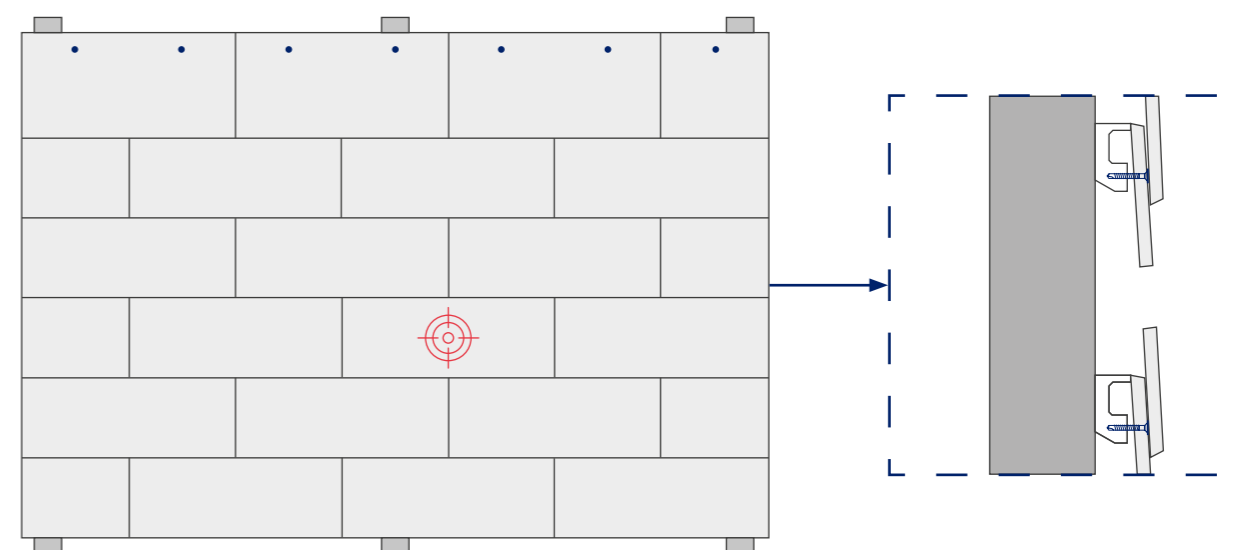


Fix the slate with 2 new screws lacquered in black

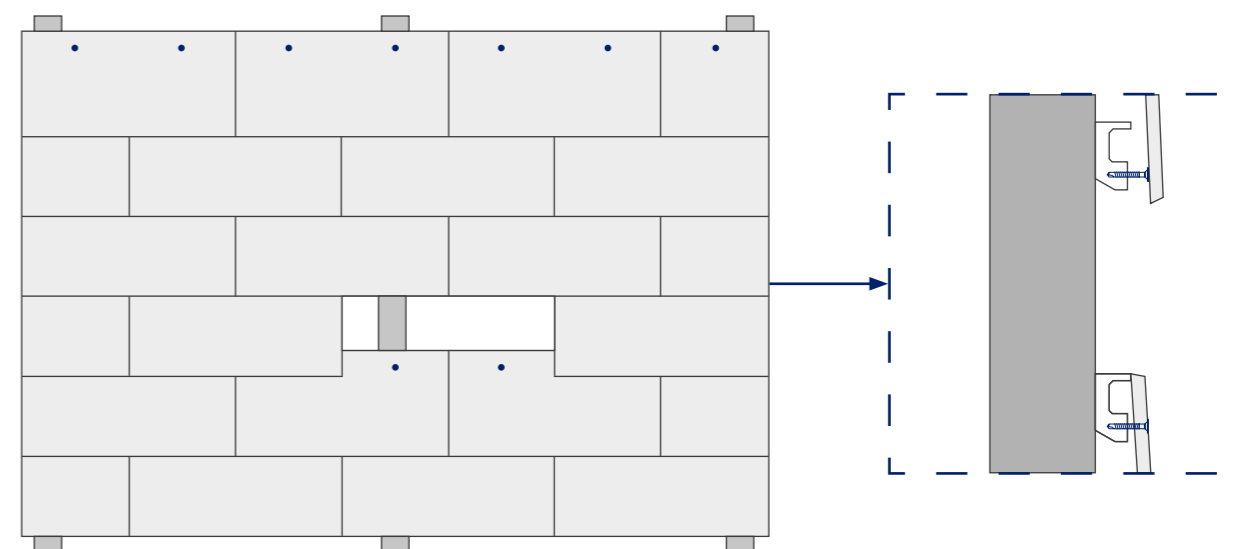


/ CUPACLAD® 101 SLATE REPLACEMENT

1 Identification of the damaged slate

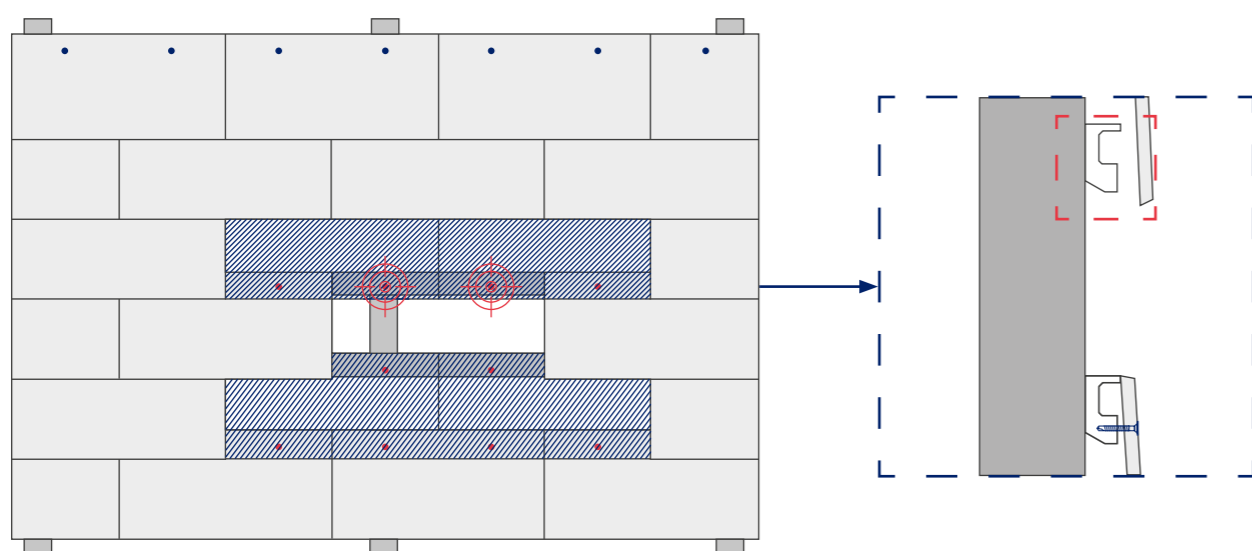


2 Removal of slate piece

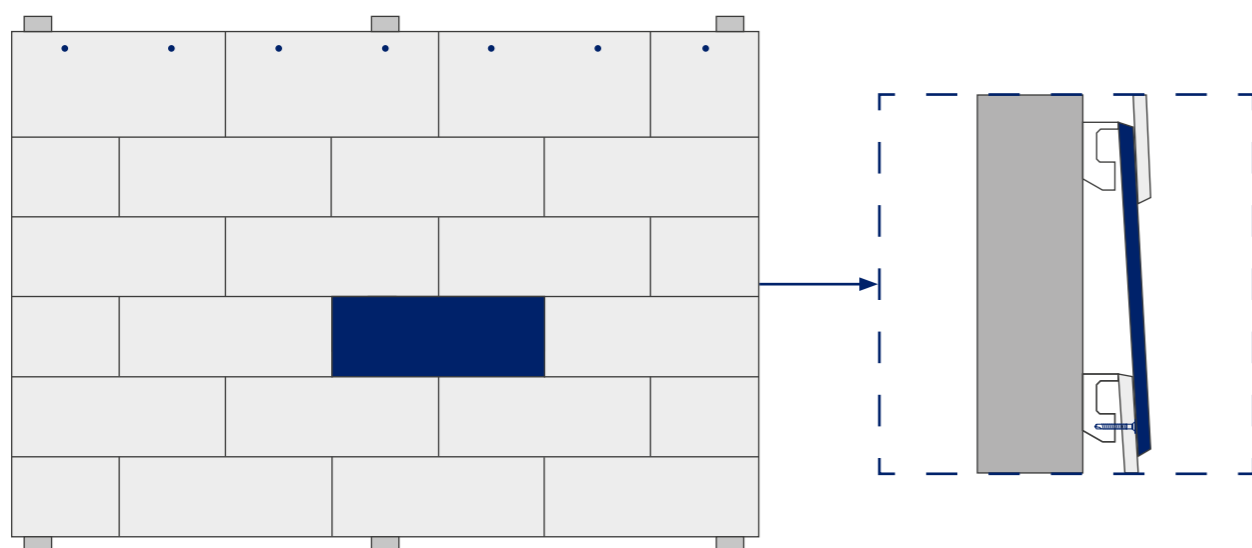


## / CUPACLAD® 101 SLATE REPLACEMENT

### 3 Location and removal of screws that fixed the damaged slate

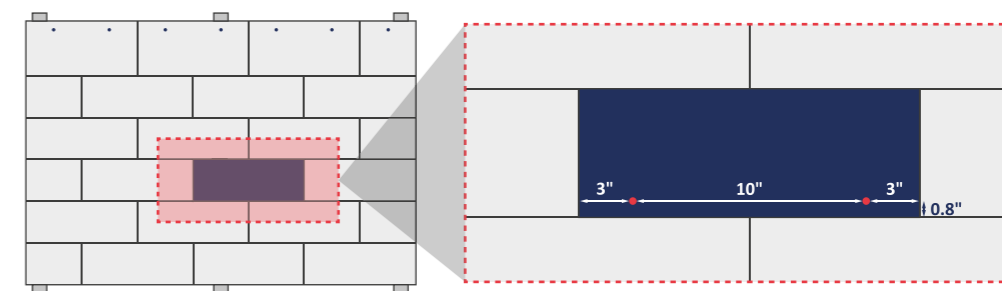


### 4 Placement of the new slate

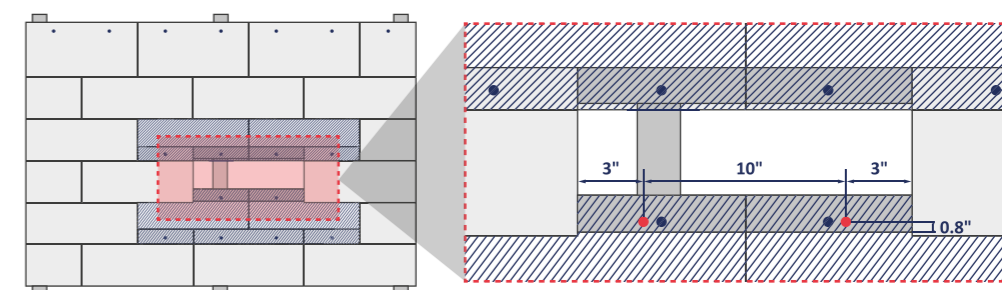


## / CUPACLAD® 101 SLATE REPLACEMENT

The most convenient option would be to fix the new slate in its bottom edge, following the instructions of the next drawing:

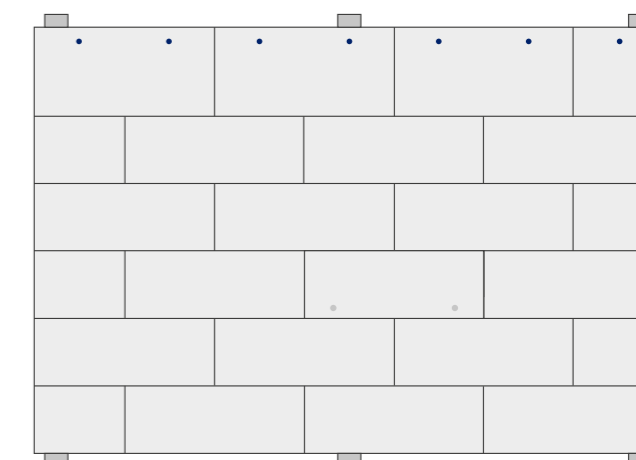
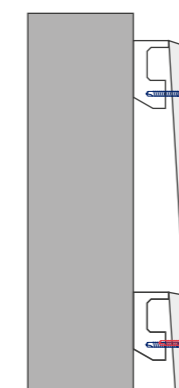
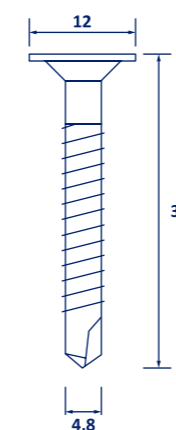


Thus, after placing the new slate in its position, two holes must be drilled 0.8" from the edge of the bottom slate. Additionally, an offset of 3" from the left lateral edge must be kept. The 3/4" distance will allow for a correct fixing of the slates onto the horizontal rail. Also, the 3" offset will allow avoiding the screws in the slate below (fixed in the same horizontal rail).



The CUPACLAD® 101 Parallel screw (length of 1 3/8") must be used to achieve a correct installation. The slate-rail distance is higher, since these screws must fix two slates instead of one, as depicted in the drawings below:

The screws installed during repair remain exposed. However, they are lacquered black to blend in with the slate.



## / CUPACLAD® 201

Required tools to replace a damaged slate in CUPACLAD® 201 system:



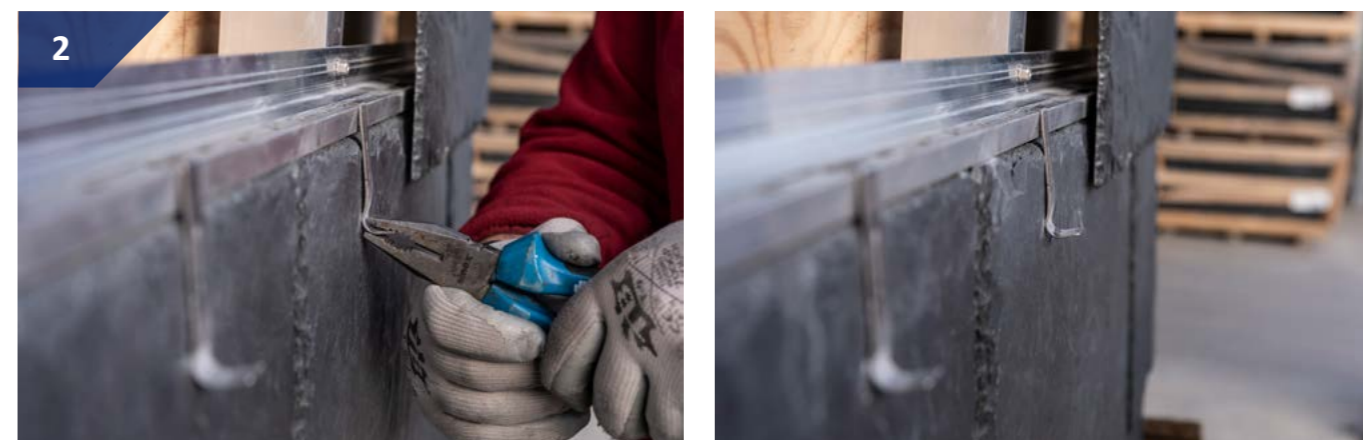
- ✓ 1 x slate 24"x 12"
- ✓ 2 x clips
- ✓ 1 x hammer
- ✓ 1 x pliers

### REPLACEMENT OF A DAMAGED SLATE IN CUPACLAD® 201 SYSTEM\_



Break the damaged slate. With a hammer, separate the broken pieces of the slate and remove them.

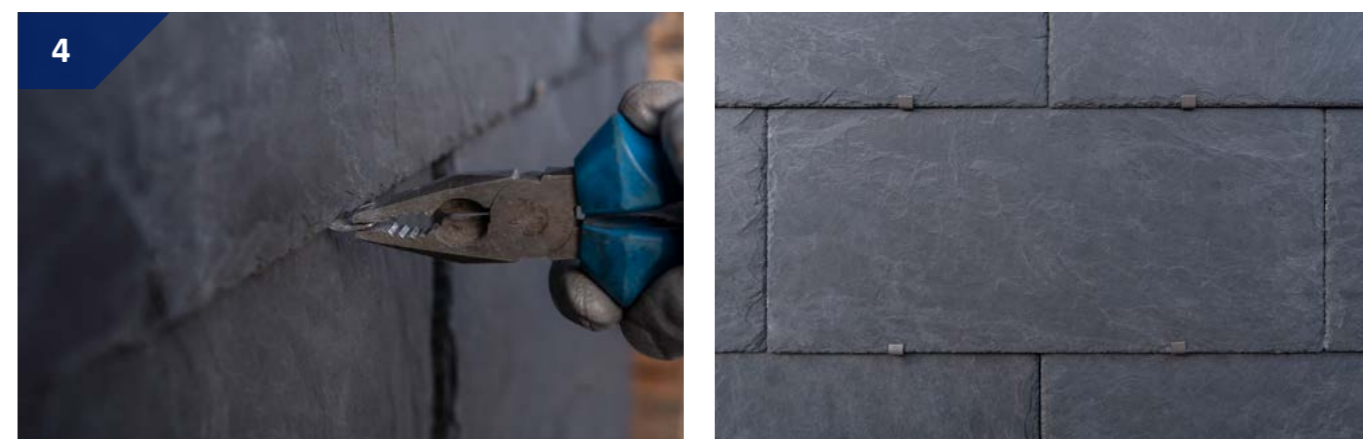
### REPLACEMENT OF A DAMAGED SLATE IN CUPACLAD® 201 SYSTEM\_



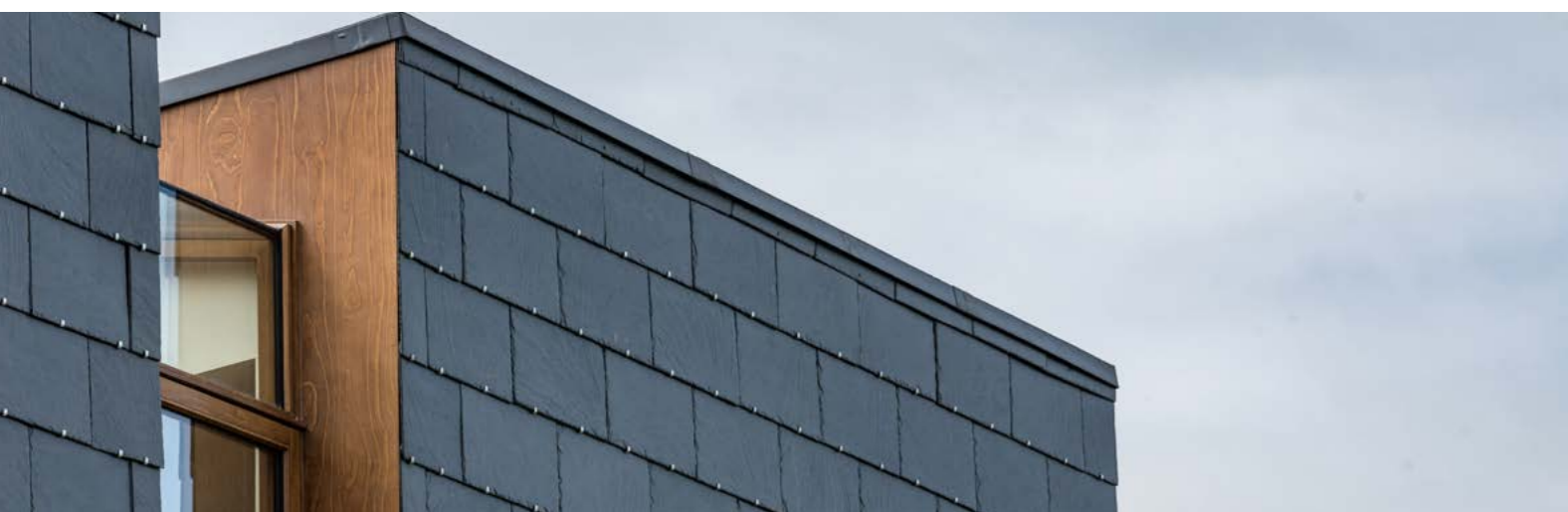
Open clips to avoid the adjustment of the new slate.



Introduce a new one slate piece.



Close the clips



## / STORAGE

- 1 Pallets of slates **must be stored** at ground level. Do not stack them. They can be kept outside or under a roof.

They are delivered to site in **wooden crates** (45 1/4" x 31" x 28"). Each crate carries both the CE marking and the product label, displaying origin (quarry name, slate size, shape and quantity of products, and a production traceability bar code).

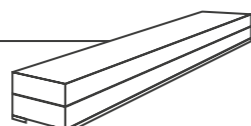


- 2 Packs of **rails** must be stacked horizontally on enough bearers to prevent distortion, and a maximum of 2 packages (8 boxes each one) can be stored on top of each other.

Horizontal and vertical rails are delivered to site banded onto **wooden pallets** with ancillary items in separate **cardboard boxes**. Thus, the storage of these goods must be done in a safe, weatherproofed space.

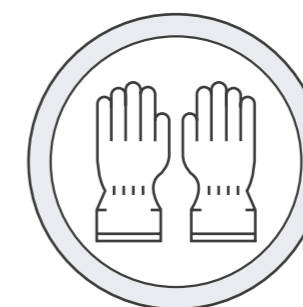
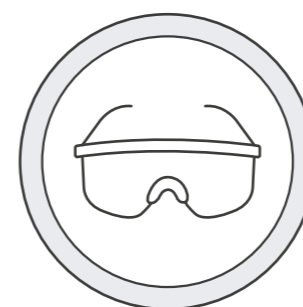


- 3 Boxes of screws, clips, and aluminum profiles must be stored in a safe weatherproof space to avoid damages.



## / HANDLING

- 1 **Slate** should be handled with care to avoid damage or breakage.
- 2 When handling **rails**, care should be taken to avoid injury from sharp edges.
- 3 Good staging practice should be observed to prevent damage to the slates and ancillary components. Protective clothing should be worn as required, and all Health and Safety rules observed.





**CUPACLAD**  
NATURAL SLATE RAINSCREEN CLADDING SYSTEMS



# CUPACLAD

Ph. 866-421-1171  
cupaclad@cupapizarras.com  
[www.cupaclad.com](http://www.cupaclad.com)

## DISTRIBUTED BY:



## VERMONT SLATE COMPANY

2600 Louisville Rd,  
Savannah, GA  
31415 - United States  
info@vermontslateco.com  
Ph. 866-339-2038  
[www.vermontslateco.com](http://www.vermontslateco.com)